



MILLING HEADS FOR MILLING INTERNAL KEYWAYS



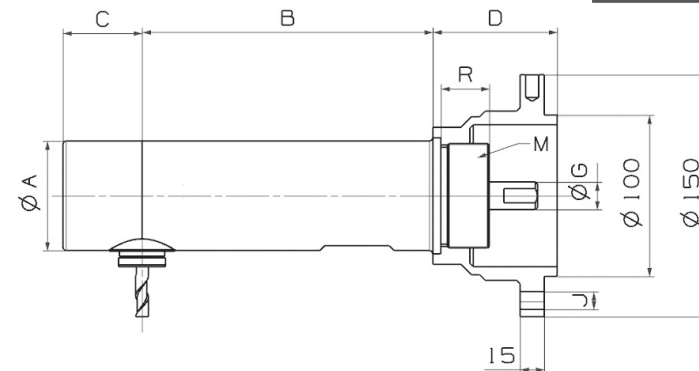
COMPLETE MILLING HEAD



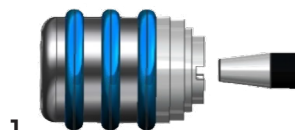
SEE VIDEO
Milling head in action



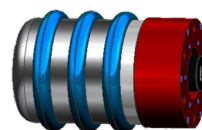
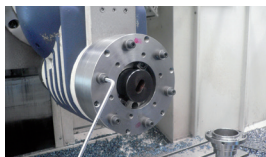
Ref.	W Working ømin	A (Head) ø	B (Working length)	C (Head flight)	⚖️	Price
CAFN1	42	35	106	16	5,6	1.518,00
CAFN2	54	47	132	35	6,7	2.282,00
CAFN3	78	68	180	50	12,4	3.042,00
CAFN4	95	85	220	58	26,4	4.126,00
CAFN5	130	113	282	76	42,5	5.435,00



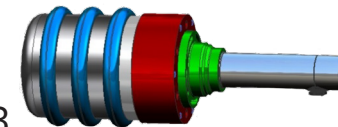
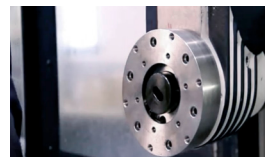
ASSEMBLY THE MILLING HEAD



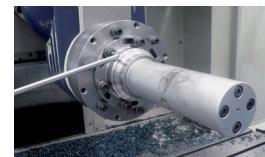
1. Mount the ISO cone on the machine



2. Assemble the coupling plate



3. Assemble the milling head



SEE VIDEO
Milling head assembling

ACCESORIES

INCLUDED



DRIVERS FOR THREADED END MILLS

Ref.	Thread	Milling head	⚖️	Price
713110	M10	CAFN3	0,1	163,60
714110	M10	CAFN4	0,2	171,50
714112	M12	CAFN4	0,2	171,50
715110	M10	CAFN5	0,3	191,10
715112	M12	CAFN5	0,3	191,10
715116	M13	CAFN5	0,3	191,10

DRIVERS KEYWAY END MILLS



Ref.	Thread	Milling head	⚖️	Price
714216	16	CAFN4	0,2	176,60
715216	16	CAFN5	0,3	189,60
715222	22	CAFN5	0,3	177,20



LARGER DIAMETER COLLET INCLUDED

Ref.	Ø	Milling head	ER	⚖️	Price
711906	6	1	-	0,1	56,80
712908	8	2	11especial	0,1	57,30
7139010	10	3	16	0,1	72,80
714912	12	4	20	0,1	76,40
715916	16	5	25	0,1	91,90

NON INCLUDED

DRIVING CONES FOR CONNECTING THE HEAD TO THE MACHINE



Ref.	ISO	CAF	⚖️	Adapter DIN2080	Price
711130	30	1	0,4	-	128,10
711140	40	1	1,1	711141	133,30
711150	50	1	2,7	711151	143,60
712130	30	2	0,4	-	128,10
712140	40	2	1,1	711141	133,30
712150	50	2	2,7	711151	143,60
713140	40	3	1,1	711141	133,30
713150	50	3	2,7	711151	143,60
714140	40	4	1,1	711141	133,30
714150	50	4	2,7	711151	143,60
715140	40	5	1,1	711141	133,30
715150	50	5	2,7	711151	143,60

EXTENSION FOR INCREASED WORKING LENGTH

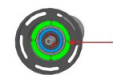


Ref.	L	Ø Exterior	Milling head	⚖️	Price
711020	90	45	1	1,0	563,00
711030	120	45	1	1,3	617,80
712020	100	54	2	1,3	592,90
712030	150	54	2	1,9	648,80
713020	125	78	3	3,6	681,80
713030	175	78	3	3,9	740,70
714020	150	95	4	6,1	768,40
714030	220	95	4	8,9	822,20
715020	200	128	5	17,5	844,50
715030	320	128	5	26,7	919,30

KM SPANNERS FOR ASSEMBLY



Ref.	KM	Milling head	Price
961071	7	CAFN1	49,40
961091	9	CAFN2	58,20
961031	13	CAFN3	38,40
961161	16	CAFN4	196,30
961211	21	CAFN5	282,10



ANOTHER SIZES OF COLLETS



Ref.	Ø	Milling head	ER	⚖️	Price
711904	4	1	-	0,1	56,80
711905	5	1	-	0,1	56,80
712904	4	2	11	0,1	57,30
712905	5	2	11	0,1	57,30
712906	6	2	11	0,1	57,30
712907	7	2	11	0,1	57,30
713906	6	3	16	0,1	72,80
713907	7	3	16	0,1	72,80
713908	8	3	16	0,1	72,80
714904	4	4	20	0,1	76,40
714906	6	4	20	0,1	76,40
714907	7	4	20	0,1	76,40
714908	8	4	20	0,1	76,40
714910	10	4	20	0,1	76,40
715906	6	5	25	0,1	91,90
715908	8	5	25	0,1	91,90
715909	9	5	25	0,1	91,90
715910	10	5	25	0,1	91,90
715912	12	5	25	0,1	91,90
715914	14	5	25	0,1	91,90